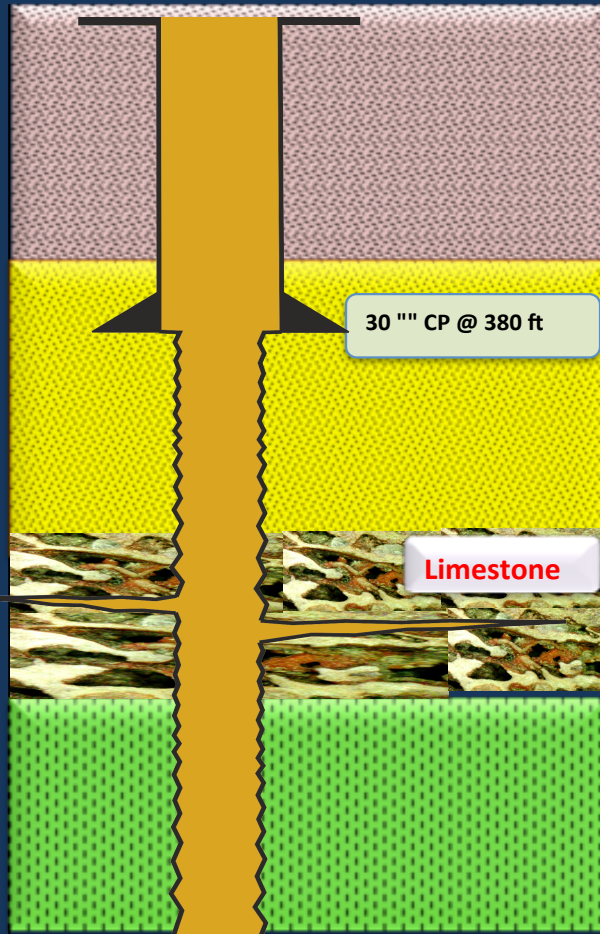


DYNAMIC LOSSES at 423 bph OFFSHORE WEST JAVA, INDONESIA



The Challenge

One of notorious loss areas in Indonesia, a troublesome carbonate/limestone section. Common problems are **Severe losses and Hole Pack offs**. In this interval, drill bits can easily encounter natural fractures and cavernous formations.

The Action

Starting from last casing at 380 ft the 17½" hole was drilled using Seawater and Hivis sweeps. Drilling at 935 ft had sudden **Dynamic loss at 423 BPH and then Total losses**. Static losses observed was at 120 BPH. **STOPLOSS** pill was deployed by pumping in sequence 20 bbls lead Hi-Vis spacer, **50 bbls @ 45 ppb STOPLOSS** pill and 20 bbls tail Hi-is spacer.

The Result

After spotting STOPLOSS Static losses reduced to 10 BPH and then nil. Washed down to 935 ft and then hole was displaced to 9.0 KCL Polymer Mud. **Drilling was resumed to target depth without any problems.**